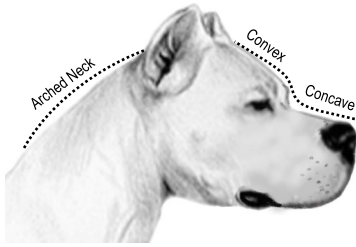
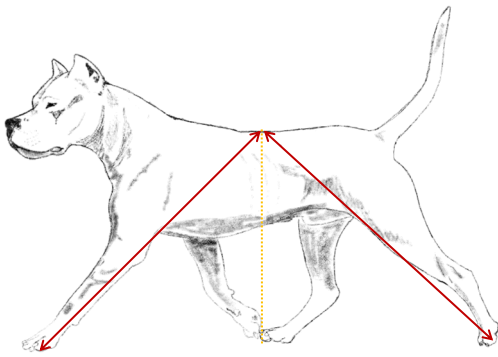
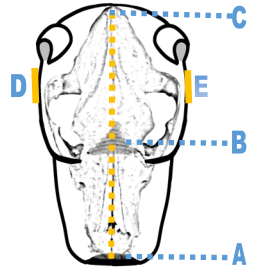


DOGO ARGENTINO AT A GLANCE



AB=BC

BC=DE



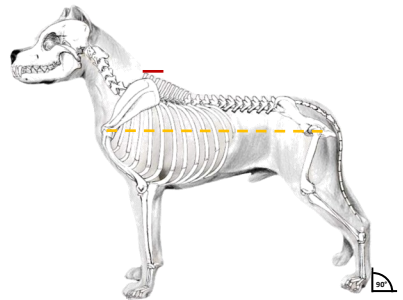
CORRECT MOVEMENT

ESSENTIAL HEAD CHARACTERISTICS

- The Dogo Argentino's head gives him a unique stamp.
- The Dogo Argentino head shape has a solid and convex skull with slightly concave muzzle.
- Cranial length is equal to cranial width.
- The length from the brow bone to the tip of the nose is equal length to the brow bone to the occiput.
- The expression is alert and intelligent, with a marked hardness.
- Nose is completely black and has large nostrils.
- Eye rim and lips are preferably pigmented in black.
- On the head, on dark external hair patch is allowed; not to exceed 10% of the size of the head.
- Exceptions: small spots on the ears are allowed and pigmented skin is allowed anywhere on the dog.

ESSENTIAL BREED CHARACTERISTICS

- Large, powerful, and athletic dog developed to find, chase and catch dangerous game.
- The muscular topline is highest at the withers and slopes slightly to the croup.
- Moderate angulation in balance with the forequarters.
- Height: Male: 24 to 26.5 inches; Female: 24 to 25.5 inches.
- The ideal Dogo Argentino is a study in harmony. The Dogo gives the impression of explosive power and energy.
- Coat: Please refer to the Letter of Clarification on acceptable vs. disqualifying markings.
- Utmost importance is given to **TYPE**.



BODY SLIGHTLY OFF SQUARE

Rev. 11/2024

IMPORTANT POINTS FROM THE LETTER OF CLARIFICATION

- The standard makes an important distinction between areas of black hair in the coat (i.e. “spots”) and areas of black pigment on the skin.
- The standard states very clearly that “***Black pigmented skin anywhere on the dog is acceptable.***”
- Depending on the length, texture and quantity of the coat on an individual dog, areas of black pigment on the skin may be visible. During winter and in colder geographical areas, as well as during times of increased hormone production such as in females in estrus and young males, it is not uncommon for gray undercoat to be seen over black-pigmented skin. **This is not to be interpreted as “a black spot anywhere other than on the head” as described in the breed standard. This is typical and normal for the breed, and not a disqualification.** The Dogo standard requires the coat — not the skin — to be completely white. As a result, Dogos with areas of black skin pigment visible through the coat, and/or gray undercoat — as opposed to actual black hair — should not be disqualified.
- While we encourage judges to do a complete exam, we would respectfully suggest that lingering excessively over a dog to examine individual hairs over each area of black pigment is not advisable. Keep in mind, if the outer shaft of the hair is white, it is **not** a spot (***even if gray undercoat is present.***)

PRIORITIES WHEN JUDGING THE DOGO ARGENTINO

- Head /Muzzle—Strong with well defined masseter muscles.
1:1 Ratio (Measured from the tip of the nose to the brow bone: brow bone to the occiput).
- Study in Harmony. Large, Powerful, Athletic. Balanced.
- Structure and movement (how they interact with each other)
- All other traits follow keeping in mind their effect on health and the ability to perform their historical function.
- A look of Marked Hardness
- Eyes—Medium sized, almond shaped, dark or hazelnut in color, set wide apart.

BREED DISQUALIFICATIONS

- Height above or below the limits established in the standard.
- Blue eye(s). Any blue color in the eye(s).
- Nose any color other than black.
- Overshot or undershot mouth.
- Top lip extending below the bottom jaw.
- Long hair.
- More than one spot on the head [external hair patch] - with the exception of small spots on the ears.
- A black spot anywhere other than on the head. [External hair patch].



DOGO ARGENTINO CLUB OF AMERICA

www.dogousa.org
judges.education@dogousa.org

Rev. 11/2024